

Release Notes

BizBroadcast 2.2.3

Build 2.2.3

November 9, 2015

Copyright Notice

BizNet Software, Inc makes no representations or warranties with respect to the contents of this document and specifically disclaims any implied warranties of merchantability or fitness for any particular purpose.

We welcome user comments and reserve the right to revise this publication and to make improvements or changes to the products and programs described in this publication at any time without notice.

Mailing Address:

BizNet Software, Inc.
14755 Preston Rd., Suite 800
Dallas, TX 75254
Epicor Software Corporation
18200 Von Karman Ave.
Suite 1000
Irvine CA 92612 USA

Phone:

1-888-803-5227

Web Site:

www.biznetsoftware.com

© Copyright 2015 by BizNet Software, Inc. All rights reserved.

Printed in the United States of America

No part of this publication may be reproduced in any form without the prior written consent of BizNet Software, Inc.

Trademarks

BizInsight is a registered trademark of BizNet Software, Inc.

Windows and Microsoft Excel are registered trademarks of Microsoft Corp.

All other trademarks are acknowledged.

Table of Contents

- 1. New Features** **1**
 - 1.1 Localization in Spanish, German, and French 1
 - 1.2 On-Demand Startup 1
- 2. Product Enhancements** **2**
 - 2.1 User Interface Improvements 2
 - 2.2 BizBroadcast On-Startup Batch Files 2
 - 2.3 Tab-Delimited Text RenderFormat 3
- 3. Issues Resolved** **4**
 - 3.1 Range name already exists message when merging tabbed parameter XLSX output 4
 - 3.2 "You can't undo deleting sheets" message using PDF or XLSXVALUES RenderFormats with a multiple tabbed parameter distribution 4
 - 3.3 Improved compatibility between BizInsight Desktop Edition and BizBroadcast . 4
- 4. Known Issues** **5**

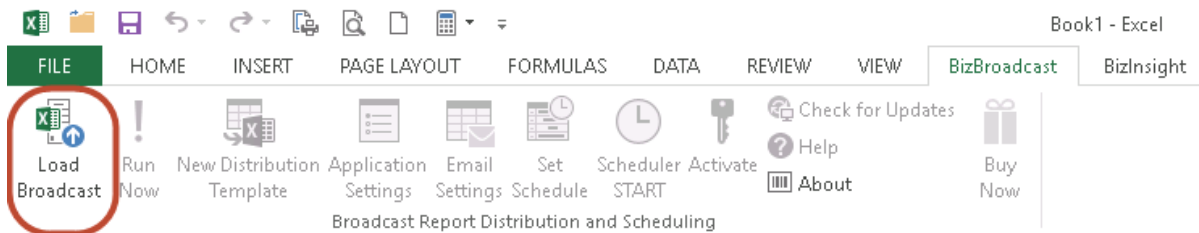
1. New Features

1.1 Localization in Spanish, German, and French

BizBroadcast supports three new languages in Excel's ribbon button, Application Settings and error prompts. Language settings are determined by the Windows local operating system regional settings of the client workstation.

1.2 On-Demand Startup

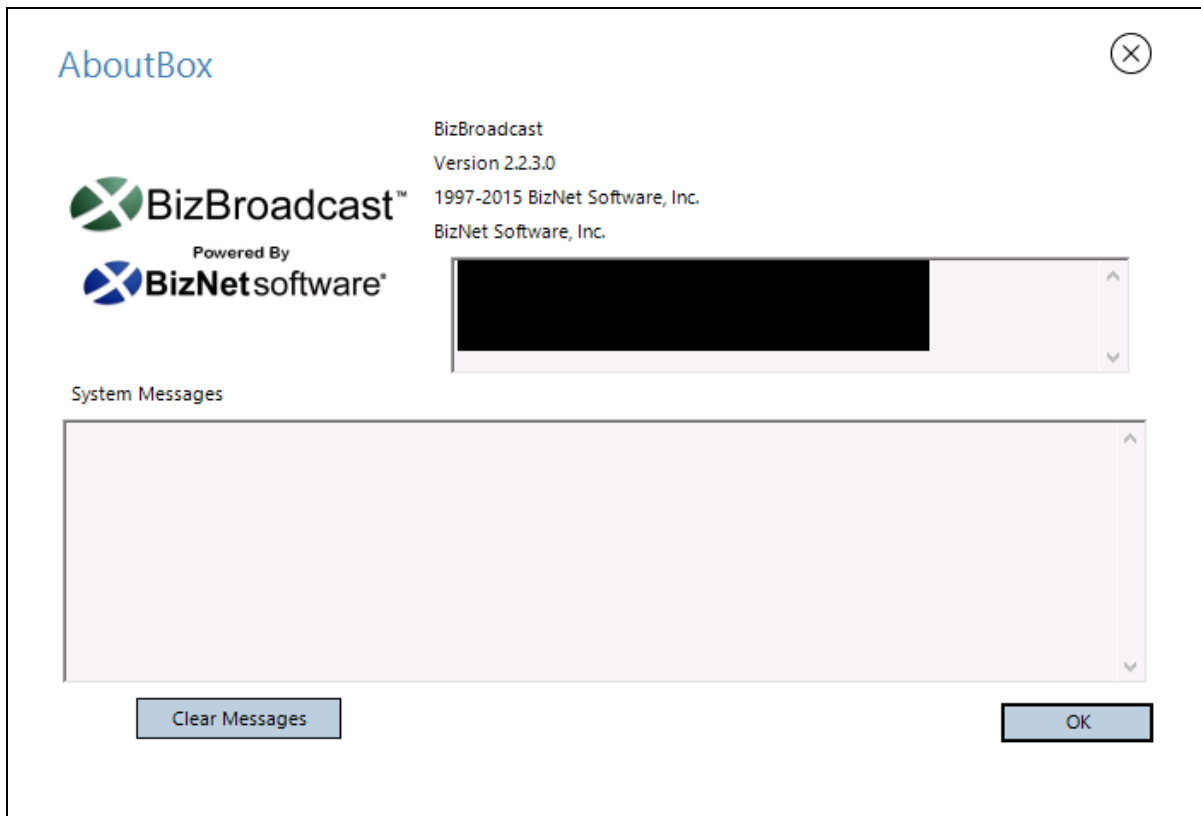
BizBroadcast has been modified to not automatically start up when Excel is started. Users must click on the **Load Broadcast** ribbon button to load BizBroadcast. The on-demand load is to reduce Excel startup add-in conflicts and improve Excel load performance.



2. Product Enhancements

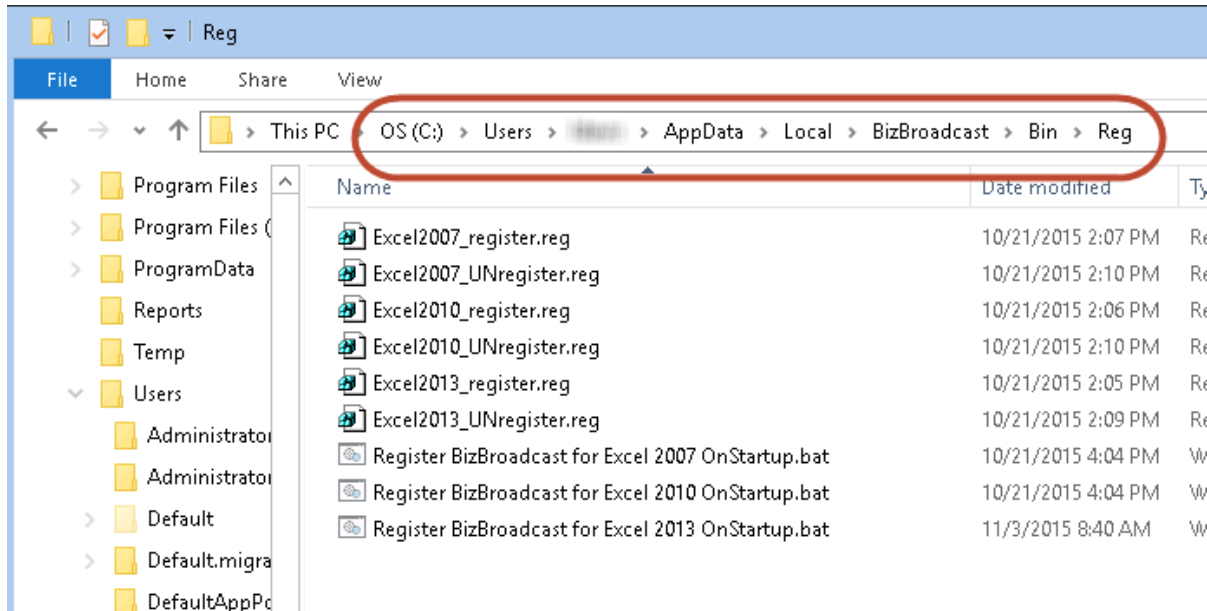
2.1 User Interface Improvements

Broadcast user interface forms and prompts have been improved to correspond with the new layout in BizNet products.



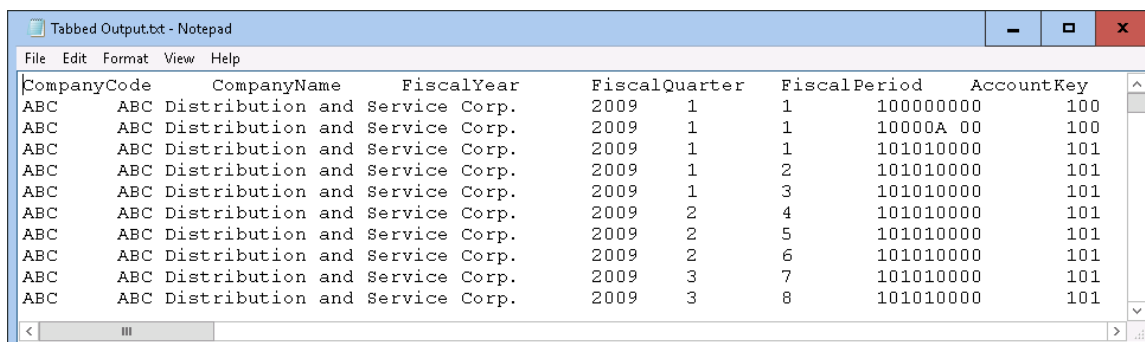
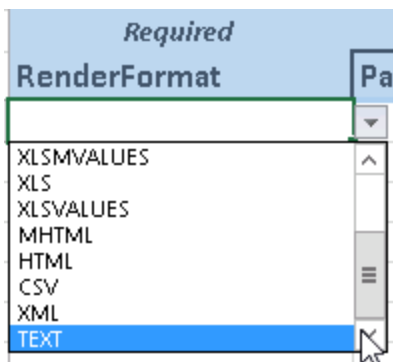
2.2 BizBroadcast On-Startup Batch Files

With the modification to the load behavior of BizBroadcast to load on-demand, new batch files are included with the BizBroadcast installation that can be used to switch BizBroadcast back to loading on Excel startup. These files are provided for users who may wish to change BizBroadcast's default load behavior from on-demand to on-startup. The new files are located in the Reg folder of the installation folder.



2.3 Tab-Delimited Text RenderFormat

A new RenderFormat, "Text", has been added to the product that saves the output in a tab-delimited text document that can be more readily imported into other applications.



3. Issues Resolved

3.1 Range name already exists message when merging tabbed parameter XLSX output

When using MergeFiles to merge Excel workbooks that are tabbed parameter output, the BizBroadcast merge process is being halted by a prompt to reconcile an issue with a named range already existing. This issue has been resolved. CASE0000029478.

3.2 "You can't undo deleting sheets" message using PDF or XLSXVALUES RenderFormats with a multiple tabbed parameter distribution

During PDF or XLSXVALUES format, multi-parameters in the tabbed parameter field results in the following error: "You can't undo deleting sheets, and you might be removing some data. If you don't need it, click Delete." This error has been resolved. CASE0000028449

3.3 Improved compatibility between BizInsight Desktop Edition and BizBroadcast

When using BizInsight Desktop Edition and BizBroadcast several issues were occurring that have been addressed:

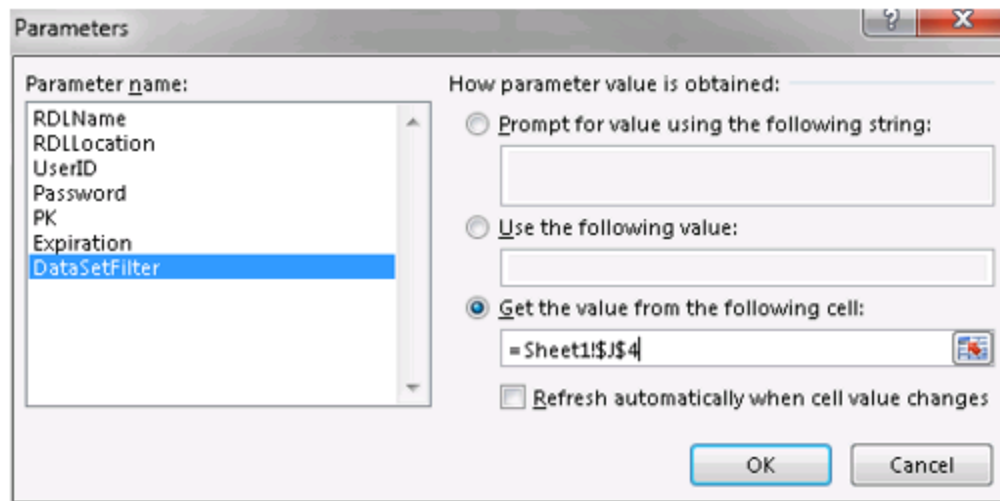
- When using Excel 2013 64-bit, Excel crashes when trying to broadcasting reports. CASE0000029504.
- Improved XLSXVALUES support in handling error prompts between BizInsight Desktop Edition and BizBroadcast.
- Improved compatibility between BizInsight, BizInsight Desktop Edition, and BizBroadcast with respect to refreshing dynamic tables and cached tables in the workbook.

4. Known Issues

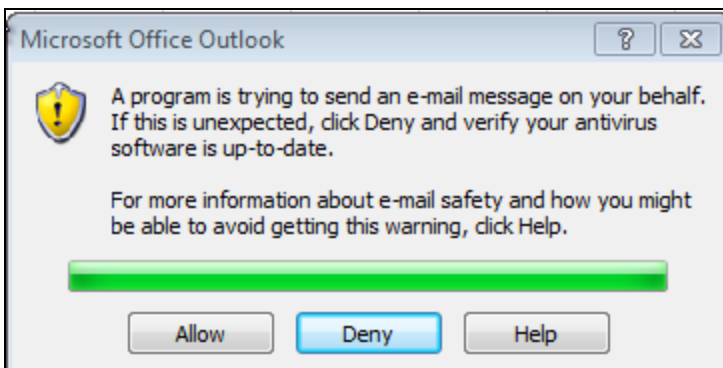
1. When errors are prompted during BizBroadcast processing, reference the About box for further details on the issue.
2. A Reference Error can occur in any workbooks. If cell referencing is used in the Distribution Template and the reference is broken or missing, BizBroadcast processing may return a #REF! error in the Excel. ID: -2146826265 in the file or file-name.

Workaround: If the drag and drop method is used, save the Distribution template in only xlsx format for Broadcast to process. The newly created workbook will need to be saved on the local machine for Broadcast to distribute multiple times. While in Excel, open the workbook template separately and click the Run Now button to process the Broadcast distribution template.

3. When users save a BizBroadcast Distribution Template with a workbook containing dynamic analysis sets (see screen shot below) and the user attempts to run a distribution, BizBroadcast will prompt the user to save the workbook and fail to distribute after the first time. Excel workbooks that are dragged and dropped from BizInsight are created as a temporary file on the local machine. BizBroadcast is unable to recognize a temporary file. The workaround for the drag and drop feature in BizInsight is to save the BizBroadcast Distribution Templates in xlsx format and save the newly created workbook on the local machine for BizBroadcast to distribute multiple times.



4. BizNet Software, Inc does not recommend using BizBroadcast to distribute workbooks with worksheet event macros (ie. Worksheet_Activate, Worksheet_SelectionChange, etc). During distribution, the macro will run once during the refresh phase of the broadcast, then again as BizBroadcast processes the worksheets(s) being distributed. In total, the macro will be executed at least twice during a BizBroadcast distribution resulting in degraded distribution performance.
5. If BizBroadcast is used to distribute reports via email using Outlook and an anti-virus program is not installed on the workstation, Outlook security will prompt the user to Allow or Deny the email for each distribution row. Install an anti-virus program on the workstation to address this issue.



6. Excel 2007 contains unsupported icons for **Check for Updates** and **Buy Now** ribbon Buttons.

